



2015
Manually Controlled System
Installation Guide



Installation Guide

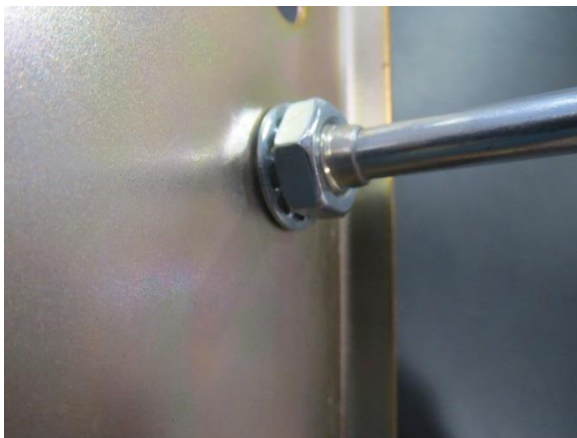
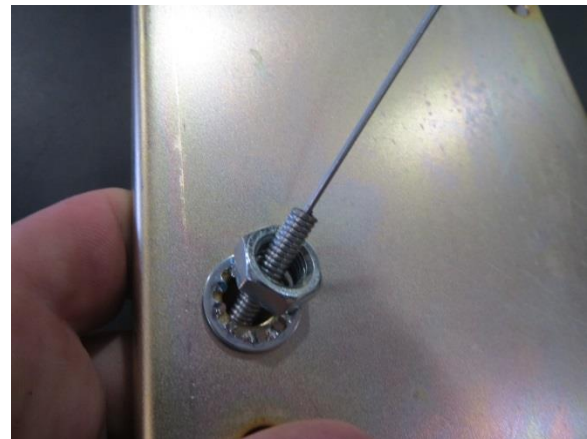
Step 1

Mount Valve Assembly with the valve down as shown using M8x1.25 hardware & 13mm tools. Valves should be mounted as close to the injection site as possible. A maximum of 48 inches is suggested for peak product performance. Do not install / mount ether systems directly on the engine, inside the operators cab, adjacent to, or near the exhaust manifold. The ether cylinder has a safety system that will vent the ether content when the pressure inside the cylinder reaches 360/460 PSI. Suitable mounting configurations include the engine firewall, vehicle frame and radiator frame. All valves should be mounted with no more than 20 degrees in vertical tilt in any axis.



Step 2

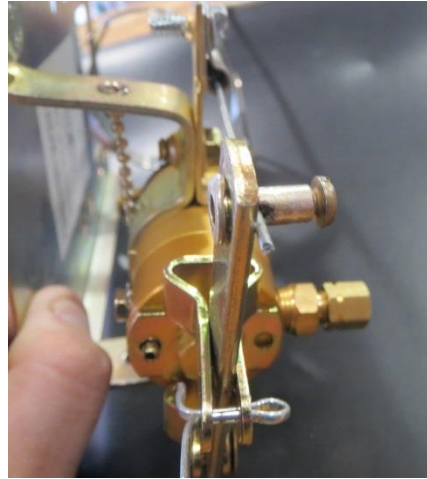
Drill a 3/8" hole in the dashboard and/or firewall. Remove nut & washer from control cable. Insert the control cable through the 3/8" hole, then through the washer, then through the control cable nut. Tighten to hold cable securely to dashboard.



Installation Guide

Step 3

Extend free end of cable through cable clamp on valve. (Kinks, looseness or tight bends should be eliminated by cutting off excess). Cable casing should extend approximately $\frac{1}{2}$ " through the cable clamp. Tighten cable clamp securely. Insert cable stop through hole in valve lever from the back side. Then run actuator wire through hole in cable stop. Insert cable screw in cable stop. Note: Before tightening cable screw make sure to leave $\frac{1}{8}$ " space between cable "T" handle and dashboard. Tighten cable screw.



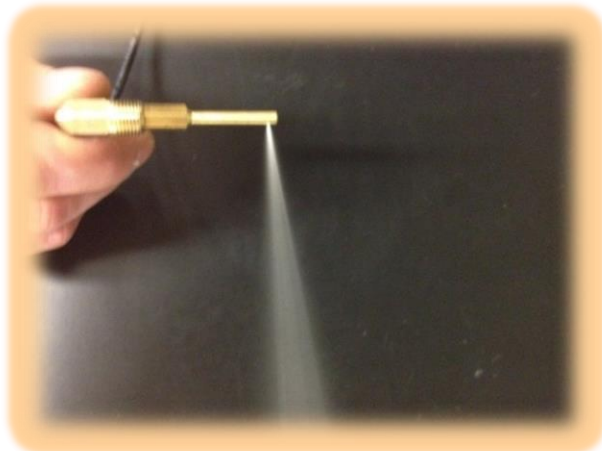
Step 3



Attach Tubing to the Control Fitting with the Compression Nut & Ferrule & a $\frac{3}{8}$ " wrench. Pull tubing to ensure the connection to the compression fitting is tight. Suggested torque spec: 25 In/Lbs.

Route tubing to the intake manifold where the atomizer port is located. Use the shortest route with the fewest bends in the tubing. Route the tubing away from sources of heat, excessive vibration and areas where physical environmental damage could occur. 48" maximum length is recommended.

Step 4



Perform Functional Spray Test by activating the system with the atomizer out of the port. Ensure you clear a space in front of where the ether is going to be atomized. Ensure atomization/vaporization. Spray should look like the picture.

Installation Guide



Step 5

Install Atomizer into the manifold port using a 3/8" wrench. Torque to 25 In/Lbs Min. The atomizer orifice should be centrally located inside the manifold or intake tube. Direct the ether spray directly into the oncoming air stream. This will provide optimum atomization and ether coverage throughout the internal air intake system. Avoid directing the ether spray onto internal walls and/or partitions inside the mounting location to avoid pooling of the ether. Attach Tubing to the Atomizer with the Compression Nut & Ferrule & a 3/8" wrench.

If your engine is using our 360° Universal FOG atomizers orientation is not necessary.

Installation of your Ether Injection System is complete. Your System is now ready for operation.

Part Number Index

QSX-XCF	-----	Ether Valve
QSX-XTC	-----	Ether Valve
LP-5X5-WG	-----	Ether Cylinder
LP-1330	-----	Push-Button Switch
LP-1199	-----	Thermostat
LP-3239-X	-----	Ether Tubing
LP-3490-X	-----	Elbow Control Fitting
LP-5161-X	-----	Straight Control Fitting
QAX-XTC	-----	Ether Atomizer
QAX-XVO	-----	Ether Atomizer
QAX-XCTU	-----	Ether Atomizer
LP-5146	-----	Compression Nut & Ferrule

**"X" denotes number, will change depending on application*

In the event of any questions or concerns, please contact us.

Quick Start Products & Solutions, Inc.

**770 Wiscold Dr.
Rochelle, IL 61068
United States Of America**

Phone: 1 (815) 562 5414

Fax: 1 (815) 562 5217

The contents of this document cannot be copied or modified in any manner without the written permission from Quick Start Products & Solutions, Inc.

